



MTServer Manual

Contents

MTServer Manual	1
1. Revision History	2
2. English Manual	3
2.1 Installation	3
2.2 Main Window	5
2.3 Advanced Setting Window	6
3. 中文手冊	7
3.1 安裝	7
3.2 主介面	9
3.3 高級設置介面	10

1. Revision History

Version	Description	Date	Author
2.0.4		2014.01.20	
2.0.5	Modify the message shown when program exit.	2014.02.07	
2.0.6	Add option for disable right click in Windows XP.	2014.05.09	
2.0.7		2014.06.10	

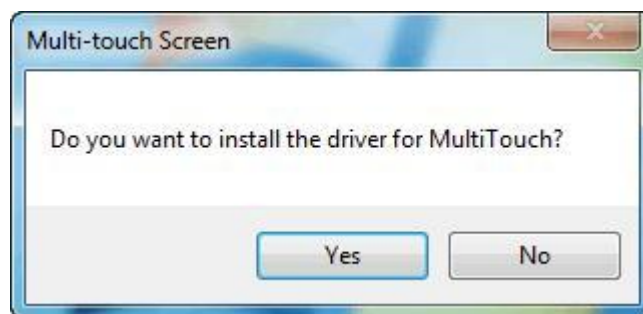
2. English Manual

2.1 Installation

- 1) The compressed driver package contains two files and one folder.
 - a) MTSERVER.exe
 - b) Config.ini
 - c) MTDriver/

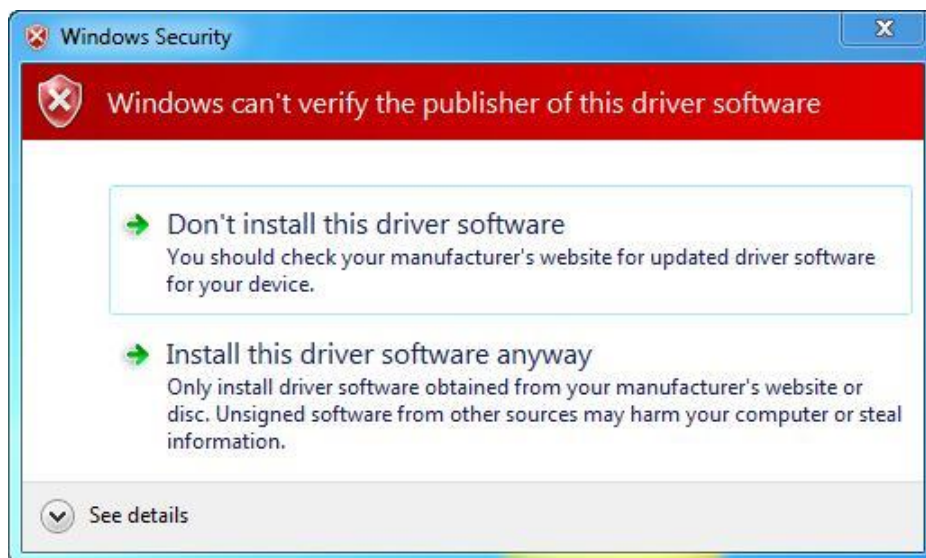
Extract all the files and folder to a folder on local disk, such as "c:\MTServer\".

- 2) Run the MTSERVER.exe. If it's the first time to run this application, there will be a dialog shown to ask you to install the driver for MultiTouch or not, as follow picture:



Just click "Yes" to continue.

- 3) If the follow dialog popped out, please choose the second option, "Install this driver software anyway", to continue.



This progress may take some time, please wait when follow dialog shown.

Please stand by...

4) After the main panel is shown as follow, the installation completed.

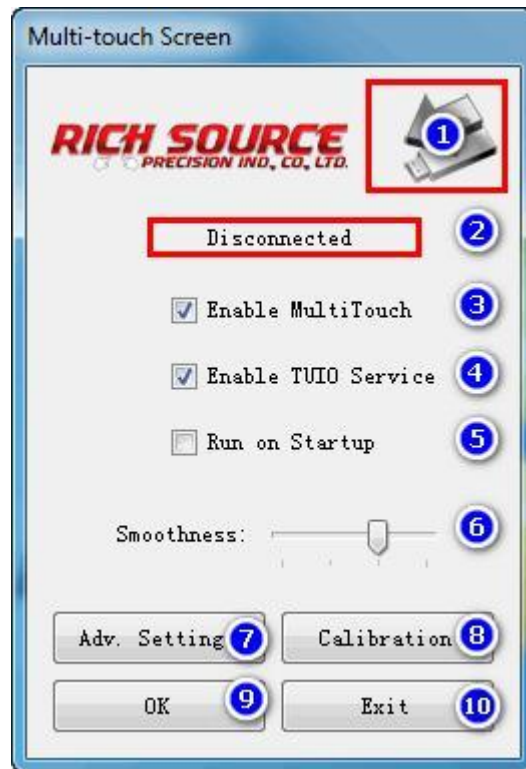


If the color of the arrow icon on the main panel is gray, that means there is no device connected. Green, that means some device has been connected.

5) If you want the touchscreen to keep working or working under the driven mode, please keep "MTServer.exe" running. Click "OK" button to minimize the window to the notification area on the bottom right corner of screen.

PS: Please do not place this driver program on removable disks when run it, such as USB stick, CD/DVD, portable hard disk.

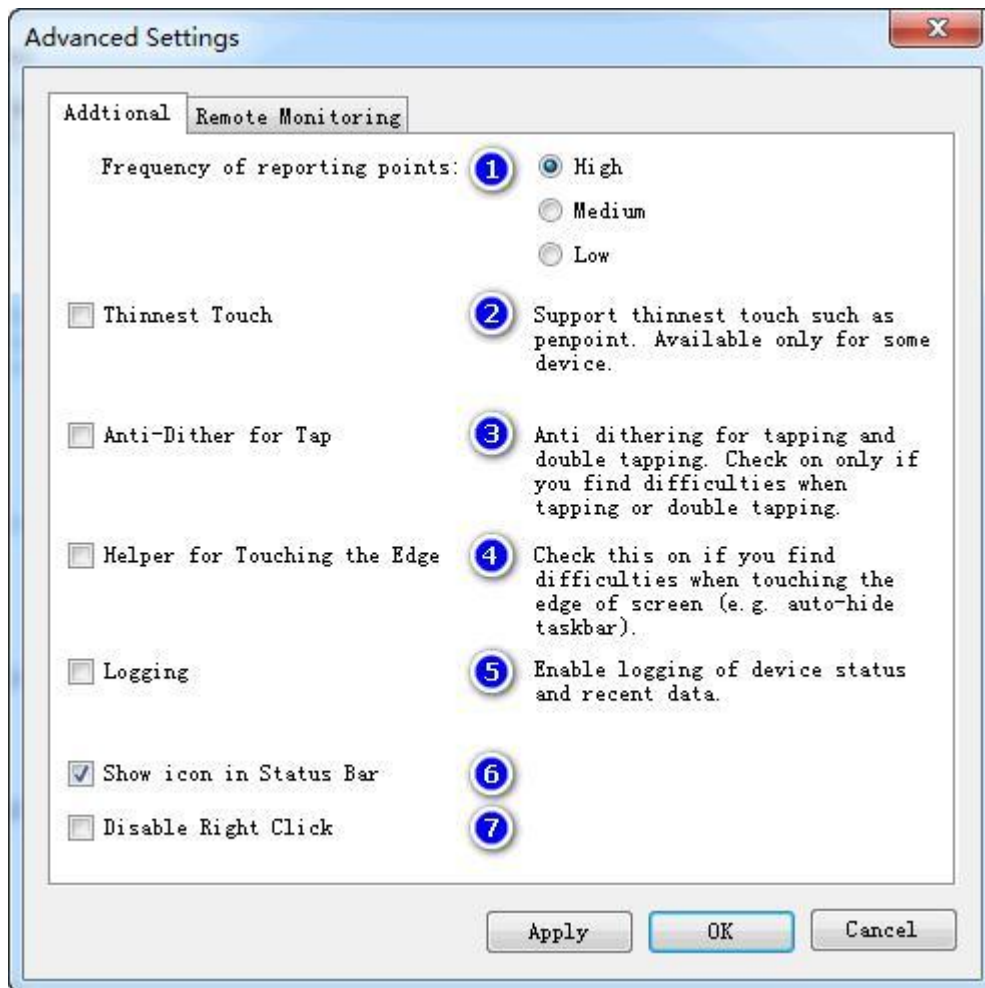
2.2 Main Window



- 1) Status Icon: If the color of this icon is gray, that means there is no device connected. If the color of this icon is green, that means some device has been connected.
- 2) Status Message: Show the working status of the connected device.
- 3) "Enable MultiTouch": Enable/Disable multi touch for windows.
- 4) "Enable TUIO Service": Enable/Disable TUIO support.
- 5) "Run on Startup": set this program to run when windows startup.
- 6) "Smoothness": set the smoothness when drawing. The higher the smoother when drawing a line, but this will affect the speed of drawing.
- 7) "Adv. Settings": Click to open the advanced settings window.
- 8) "Calibration": Click to open the calibration window and begin calibration. When calibrating, you could press "Esc" to cancel calibration.
- 9) "OK": Click to minimize the window to the notification area on the bottom right corner of screen, but no exit.
- 10) "Exit": Click to exit.

2.3 Advanced Setting Window

2.3.1 Common Settings



- 1) "Frequency of reporting points": set the frequency of reporting touching points.
- 2) "Thinnest Touch": Support thinnest touch such as pen. Available only for some device.
- 3) "Anti-Dither for Tap": Anti dithering for tapping and double tapping. Check this on only if you find difficulties when tapping or double tapping.
- 4) "Helper for Tapping the Edge": Check this on if you find difficulties when touching the edge of screen (e.g. auto-hide taskbar).
- 5) "Logging": Enable logging of device status and recent data. The log is placed in the "log" folder in the driver's directory.
- 6) "Show icon in Status Bar": set whether to show the program icon in the notification area on the bottom right corner of screen or not.
- 7) "Disable Right Click": set whether to disable right click in Windows XP or not. Right click is enabled by default in Windows XP. This option is visible only in Windows XP.

3. 中文手冊

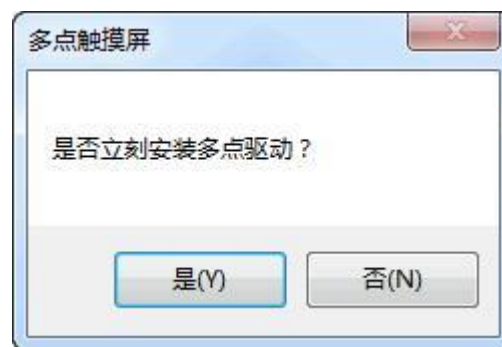
3.1 安裝

- 1) 驅動壓縮包中包含兩個檔和一個資料夾

- a) MTServer.exe
- b) Config.ini
- c) MTDriver/

解壓所有檔和資料夾到本地磁片的一個資料夾中，比如"C:\MTServer\"。

- 2) 運行 MTServer.exe。如果是第一次運行，會出現如下的對話方塊提示您是否安裝多點驅動。

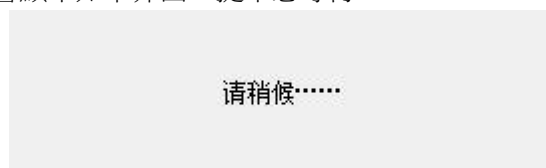


點擊“是”繼續。

- 3) 如果彈出如下的對話方塊，請選擇第二個選項，“始終安裝此驅動程式軟體”，繼續。



這個過程需要一段時間，會顯示如下介面，提示您等待。



4) 等主介面顯示後，則安裝完成，如下圖。



主介面上的箭頭圖示的顏色為灰色，代表設備未連接；綠色，代表設備已連接。

5) 如果您希望有驅觸摸框持續工作，或者免驅觸摸框持續工作在有驅模式下，請保持 UIMTServer.exe 一直運行。點擊“確定”按鈕，視窗會最小化到右下角通知區域。

注意：請不要將該驅動放在可移除介質上使用，比如 U 盤、光碟、移動硬碟等。

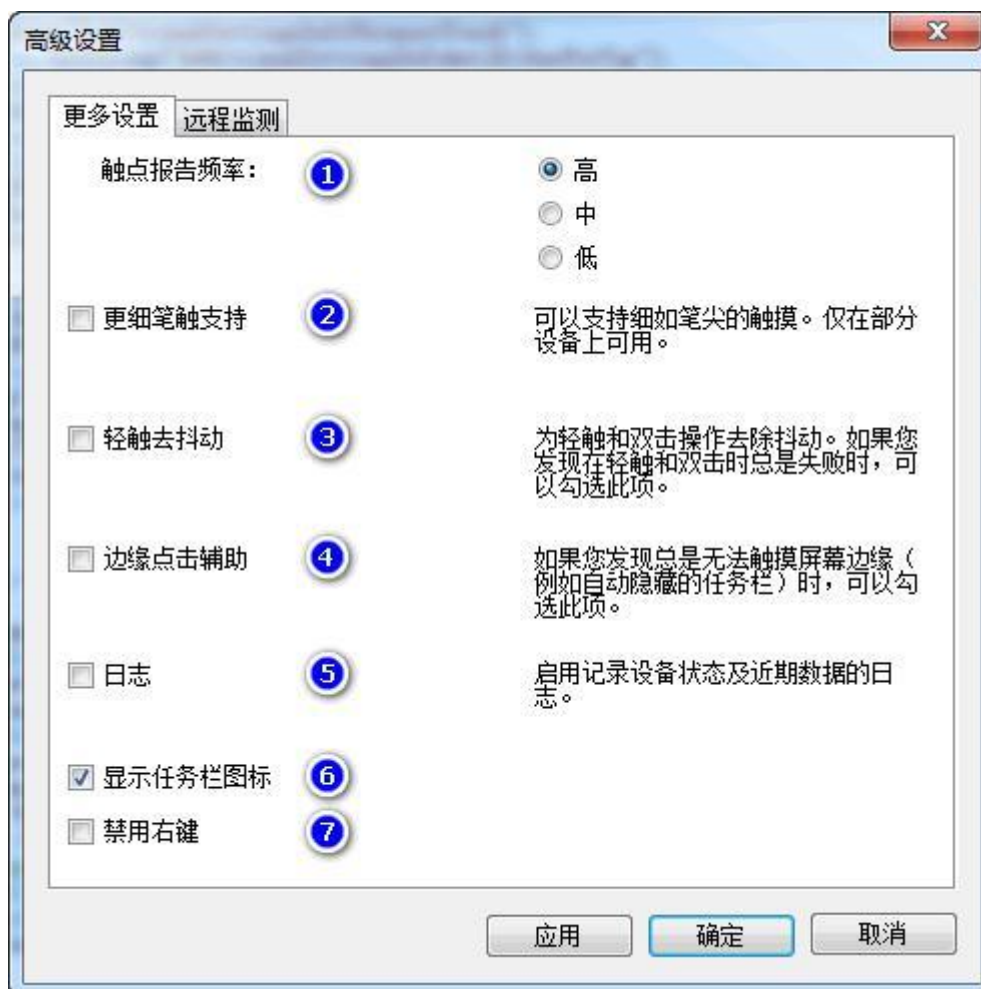
3.2 主介面



- 1) 狀態圖示，灰色表示設備未連接，綠色表示設備已連接。
- 2) 狀態提示，顯示當前設備的工作狀態。
- 3) “啟用多點驅動”：設置是否啟用 windows 多點觸摸。
- 4) “啟用 TUIO 服務”：設置是否啟用 TUIO 支援。
- 5) “開機自動啟動”：設置是否開機自動啟動該程式。
- 6) “平滑效果”：設置畫線時的平滑程度，越高畫線越平滑，但會影響畫線速度。
- 7) “高級設置”：打開高級設置視窗。
- 8) “座標校準”：打開校準視窗，並開始校準。校準中，可以按 **Esc** 鍵取消校準。
- 9) “確定”：最小化程式視窗到右下角通知區域，但不退出。
- 10) “退出”：程式退出。

3.3 高級設置介面

3.3.1 常用設置



- 1) “觸點報告頻率”：設置驅動上報觸摸資料的頻率
- 2) “更細筆觸支持”：可以支援細如筆尖的觸摸，僅對部分設備有效。
- 3) “輕微去抖動”：為輕觸和按兩下操作去除抖動。如果您發現在輕觸和按兩下時總是失敗，可以勾选此選項。
- 4) “邊緣點擊輔助”：如果您發現總是無法觸摸到螢幕邊緣（例如自動隱藏的工作列）時，可以勾选此選項。
- 5) “日誌”：啟用記錄設備狀態及近期資料的日誌。日誌位於驅動程式目錄的“log”資料夾內。
- 6) “顯示工作列圖示”：設置是否顯示位於右下角通知區域的驅動程式圖示。
- 7) “禁用右鍵”：設置是否在 Windows XP 系統中禁用滑鼠右鍵功能。滑鼠右鍵功能在 Windows XP 系統中是預設啟用的。該選項僅在 Windows XP 系統中可見。